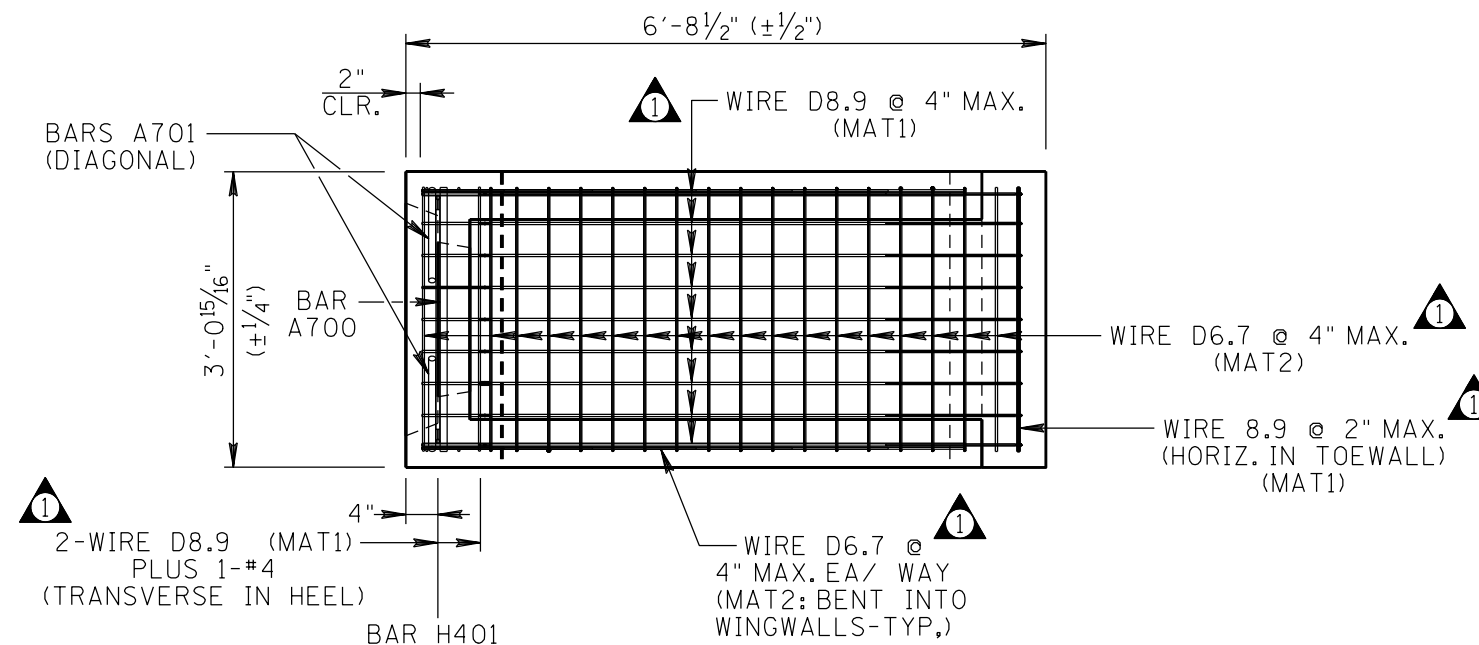


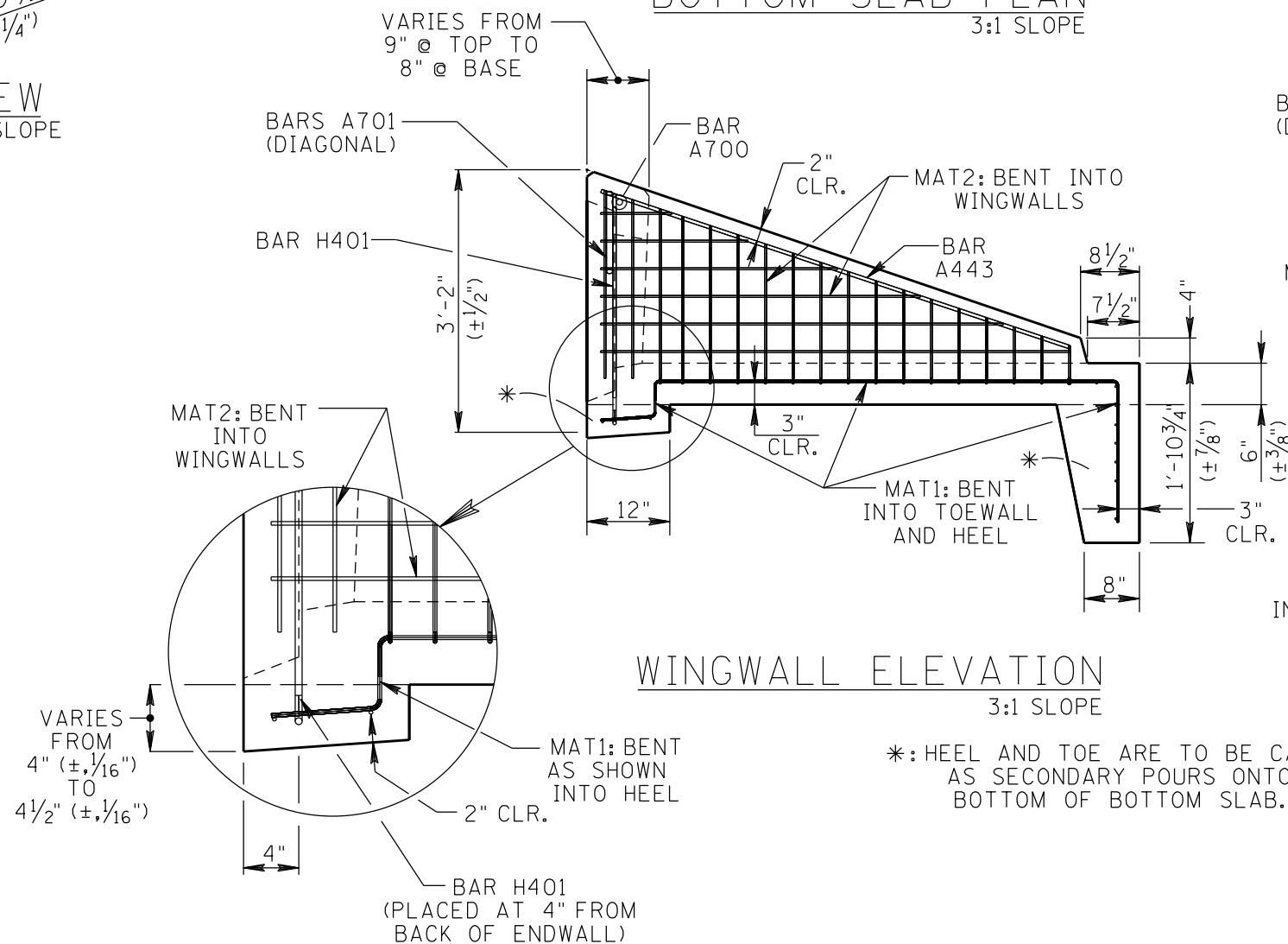
ISOMETRIC VIEW
SHOWING DIMENSIONS, 3:1 SLOPE

GENERAL NOTES

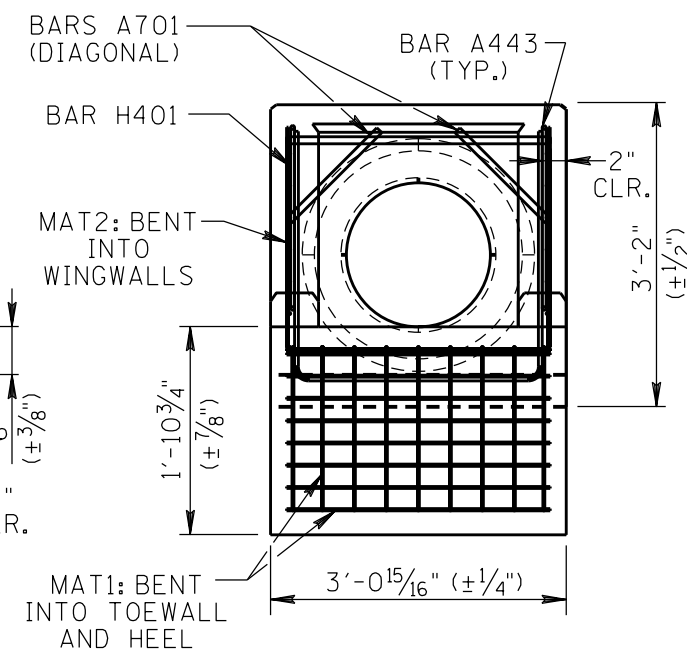
1. SPECIFICATIONS: TDOT 2006 EDITION WITH CURRENT ADDENDA.
2. DESIGN SPECIFICATIONS: AASHTO LRFD SPECIFICATIONS, CURRENT EDITION.
3. CONCRETE TO BE CLASS "A", $f'_c=4,500$ P.S.I.
4. REINFORCING STEEL PROVIDED AS RE-BAR TO BE IN ACCORDANCE WITH ASTM A615, $F_y=60,000$ P.S.I./.
5. REINFORCING STEEL PROVIDED AS WELDED WIRE REINFORCEMENT (WWR) TO BE IN ACCORDANCE WITH ASTM A1064, DEFORMED WIRE WITH $F_y\text{-MIN}=70,000$ P.S.I./.
6. WELDED WIRE REINFORCEMENT SHALL BE PROVIDED IN 2 CUSTOM MATS. WHEN COMBINED, MATS SHALL PROVIDE REQUIRED WIRES AT A MAXIMUM SPACING OF 4" EACH WAY.
THE TWO CUSTOM MATS SHALL BE BENT AS REQUIRED TO REINFORCE WALLS, HEEL AND TROUGH.
7. SEE TDOT STANDARD DRAWING NOS. D-PE-18A AND D-PE-18B FOR ADDITIONAL CONSTRUCTION REQUIREMENTS.
8. BAR BENDS FOR RE-BAR SHALL BE IN ACCORDANCE WITH CRSI MANUAL OF STANDARD PRACTICE.
9. BENDS FOR WELDED WIRE FABRIC SHALL BE IN ACCORDANCE WITH THE MANUAL OF STANDARD PRACTICE AS PUBLISHED BY THE WIRE REINFORCEMENT INSTITUTE.



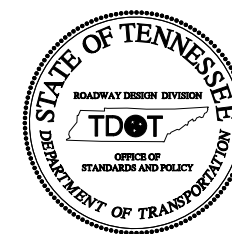
BOTTOM SLAB PLAN
3:1 SLOPE



WINGWALL ELEVATION
3:1 SLOPE



END ELEVATION
3:1 SLOPE

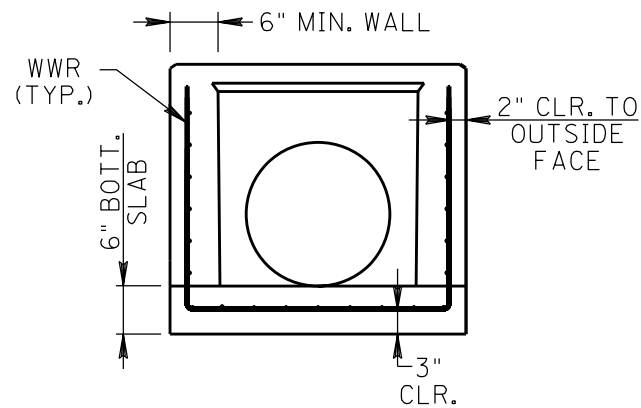


APPROVED

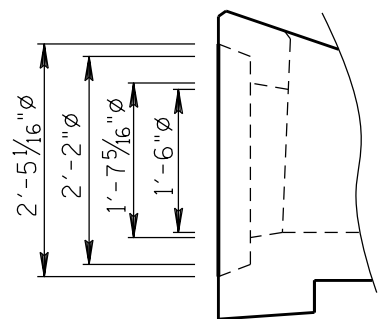
11-20-14: CHANGED ALL AREAS OF STEEL TO BE >TDOT STD.
09-11-14: TDOT REVIEW

1
OF 2

① WIRE AREA EXAMPLE:
WIRE D8.9: DESIGNATES
DEFORMED WIRE WITH
AREA = .089 IN²/WIRE



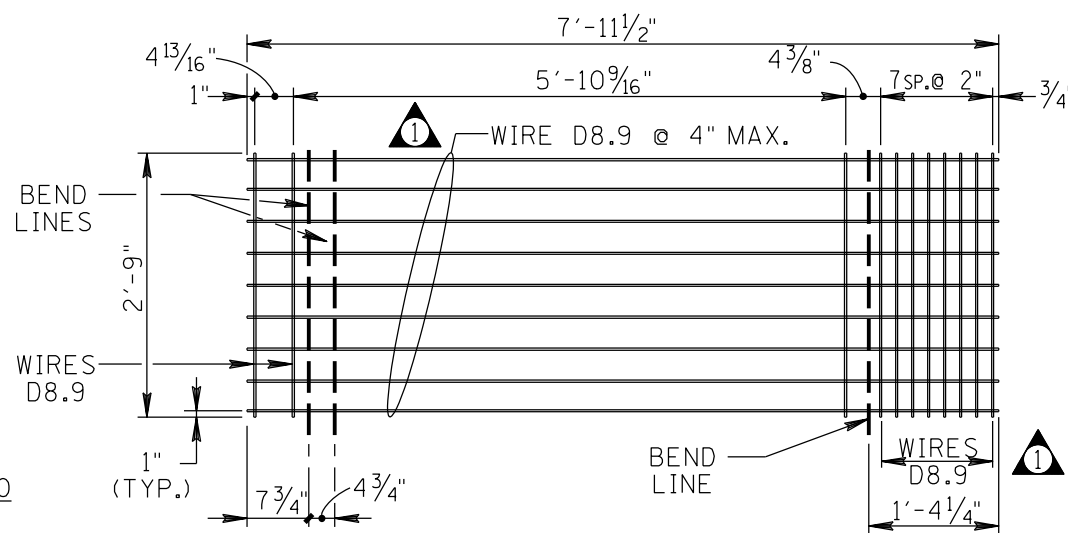
WALL SECTION
SHOWING CLEARANCES TO WELDED
WIRE REINFORCEMENT (WWR)



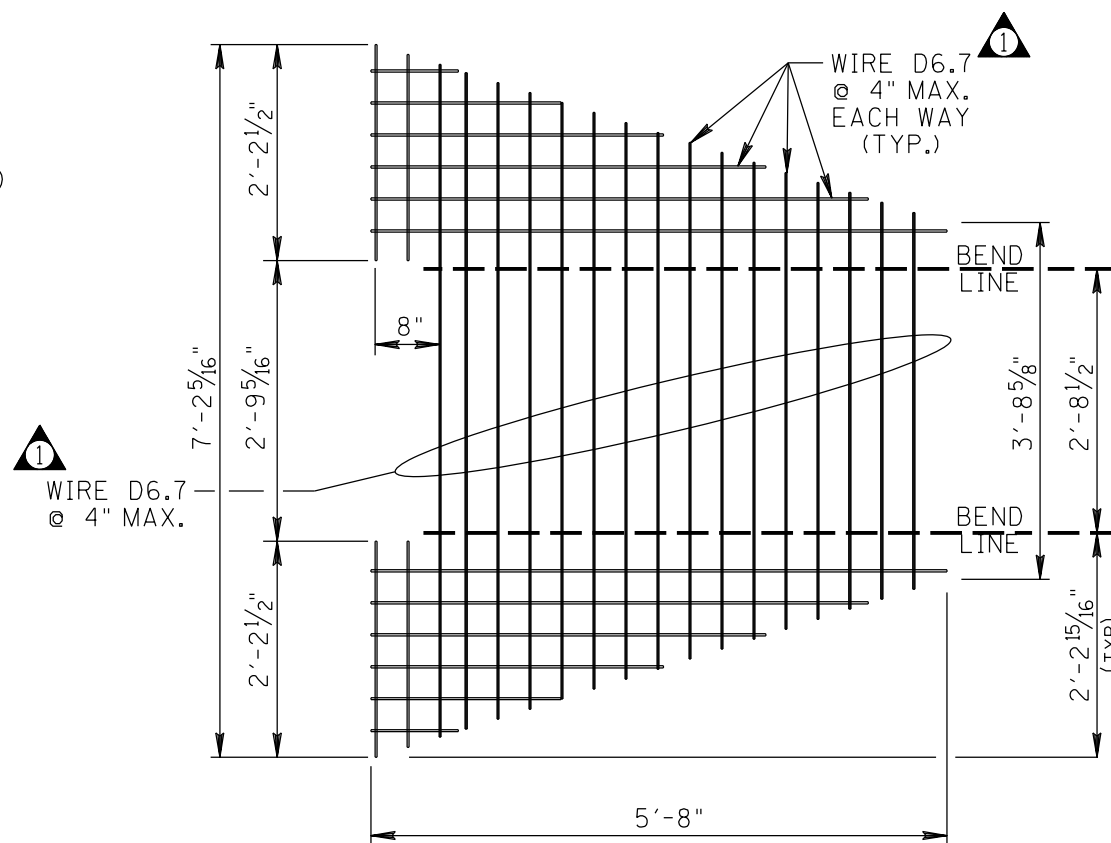
END SECTION
SHOWING STEPPED
OPENING DIAMETERS

BAR	NO.	DIM "A"	DIM "B"	LENGTH
H401	1	2'-6 5/8"	2'-8 1/4"	7'-8 13/16"
A443	2	5'-11 1/2"	N/A	5'-11 1/2"
A700	1	2'-9"	N/A	2'-9"
A701	2	1'-2 7/8"	N/A	1'-2 7/8"

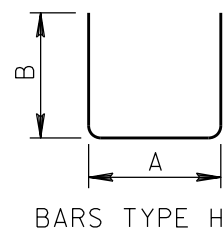
BILL OF
STEEL: RE-BAR



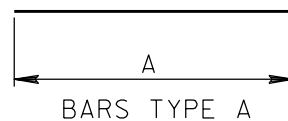
WWR MAT 1



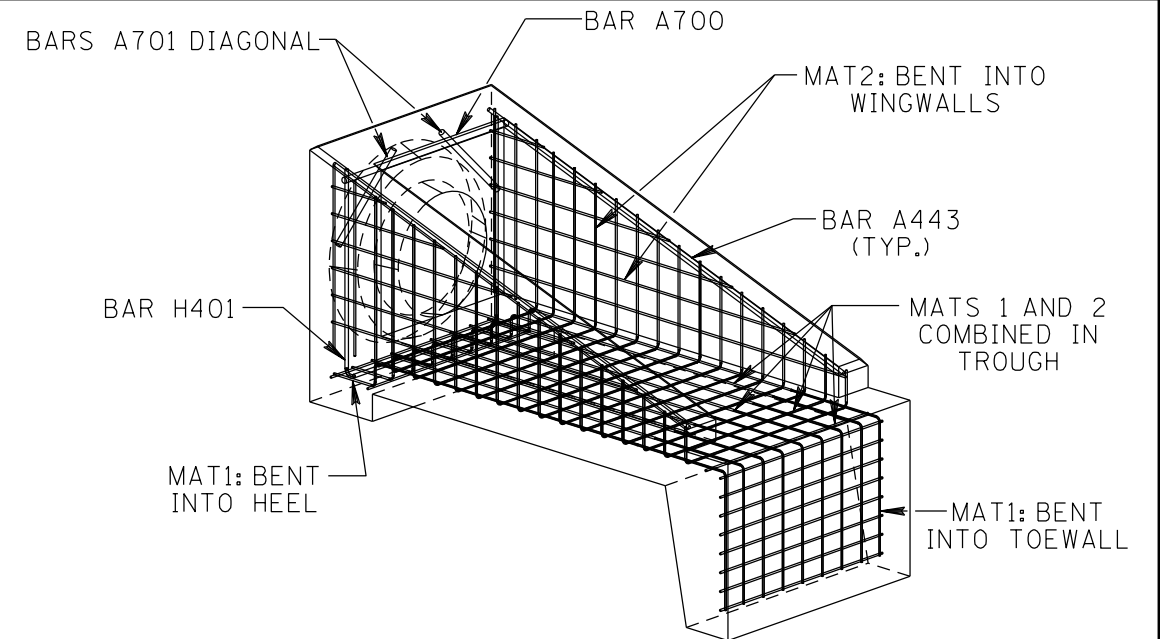
WWR MAT 2



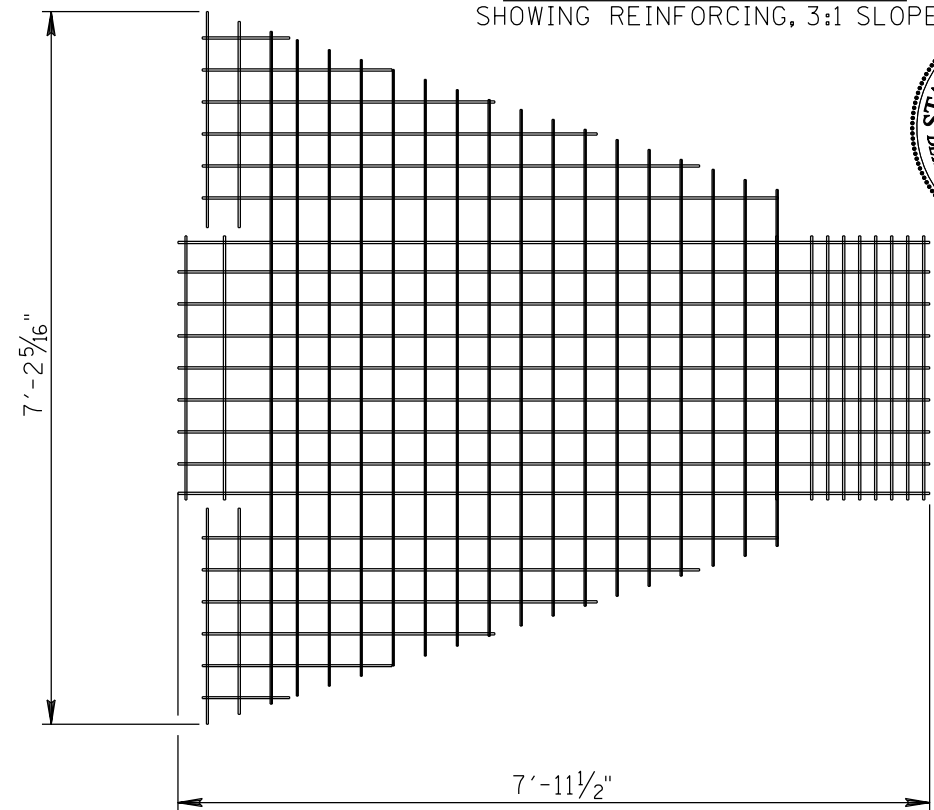
BARS TYPE H



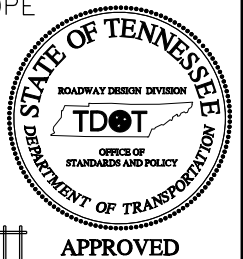
BARS TYPE A



ISOMETRIC VIEW
SHOWING REINFORCING, 3:1 SLOPE



COMBINED MAT1 AND MAT2
(SHOWN WITHOUT BENDS IN MAT 1)



① 11-20-14: CHANGED ALL AREAS
OF STEEL TO BE >DOT STD.
09-11-14: TDOT REVIEW